



SUPERIOR PUMP®



Engineered to perform.
Built to last.®



1-800-495-9278
superiorpump.com



**SUPERIOR
PUMP®**

POOL PRODUCT CATALOG



Engineered to perform.
Built to last.®

SUPERIOR PUMP®

At Superior Pump, we're driven by our commitment to improve quality in every product we create. As a proud family-owned business with a combined 150 years of pump industry experience, we are dedicated to delivering the highest quality pumps and accessories. Each product is built using innovative technology and premium components to ensure that our pumps are truly Built To Last®! With a robust industry-leading warranty and unparalleled 7 days a week customer service team based in St. Paul, MN, we deliver personalized attention to fulfill each customer's unique needs.



Engineered to perform.
Built to last.®

Superior Construction Delivers Lasting Performance



**Vertical or Tethered
Float Switches**

**Piggyback plug Float
Switch for Automatic
or Manual Operation**

**Permanent Split
Capacitor (PSC)
Motor**

**Solid Copper Motor
Windings**

Double O-Ring Seals

**Heavy Duty
Mechanical
Shaft Seal**

**Removable Intake
Screen**

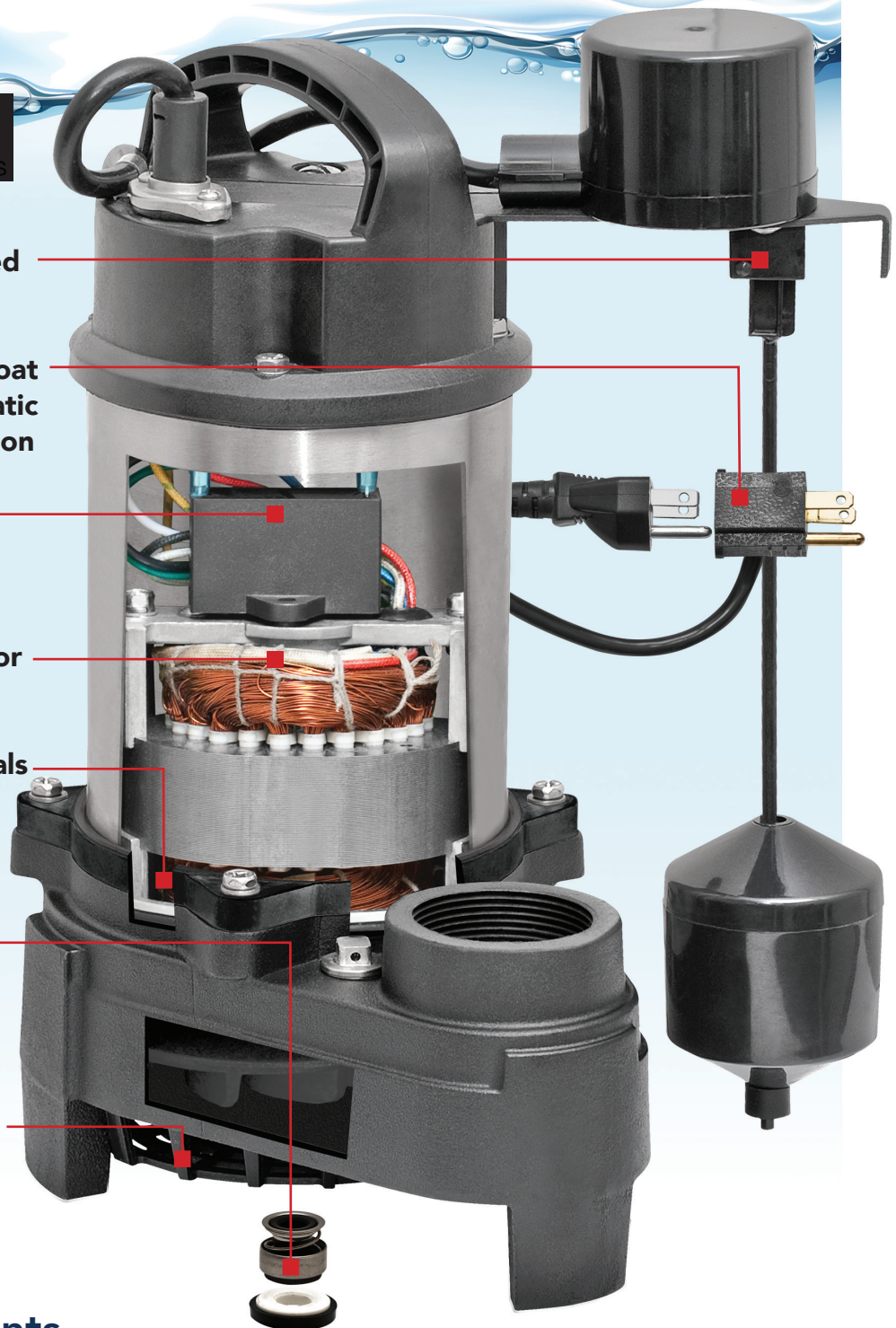


Table of contents

About / Support	1	Thermoplastic Utility	7-8	Cast Iron Sump.....	10-11
Why Buy Superior.....	2	Cast Iron Utility.....	8	Float Switch	12
Pool Cover	5	Mag Drive Utility	9	Adapter	12
Main Drain	5	Stainless Steel Sump	9-10	Hose Kit.....	12
Stainless Steel Utility	5-6	Thermoplastic Sump	10	Check Valve	13-14

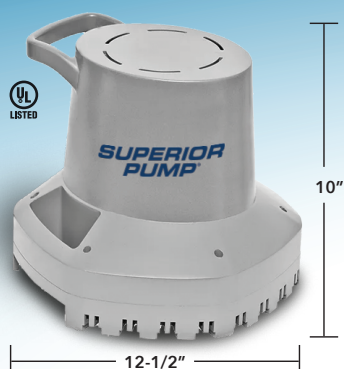


Superior Pump's Wide Selection of Powerful Water Out Solutions

No matter the task - hot tubs, pools or pool covers - Superior Pump delivers the perfect solution for every application.



Pool Cover Pump



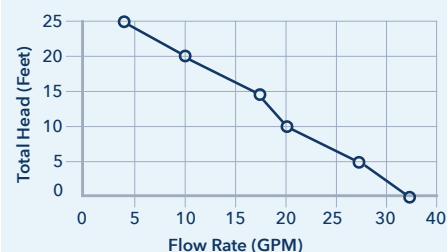
- Activates in 1-1/2" of water
- Thermoplastic construction with three built-in handles for ease of transport and installation
- 1" NPT horizontal discharge
- 3/4" Garden hose adapter included
- Large base design for added stability
- Intake screen filters debris
- Size: 12-1/2" W x 12-1/2"D x 10" H
- SJE Rhombus® Internal automatic vertical float switch

2100 Gallons Per Hour | **3** Year Warranty

Model	Construction	Amps	Discharge Size	Discharge Type	Adapter Type	Switch Type	Cord Length	Warranty
92395	Thermoplastic	3.8	1"	Side	3/4" GHT	Vertical	25'	3 Year

Thermoplastic

Head	GPM	GPH
0'	35	2100
5'	27	1620
10'	20	1200
15'	17	1020
20'	10	600
25'	4	240



1/2 HP Main Drain Utility Pump



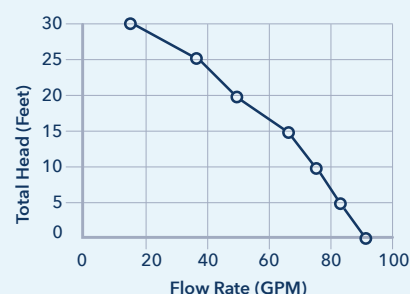
- Continuous duty, thermally protected split capacitor motor
- Pump will lift water up to 30' of vertical height
- Corrosion resistant stainless steel construction
- Large 1-1/4" discharge and 1-1/4" MPT x 1-1/2" BARB adapter included
- Intake screen removes easily for cleaning
- Clog resistant stainless steel impeller
- Will fit inside most 8" pool drains
- Tethered float switch for automatic operation (92875)

5580 Gallons Per Hour | **1** Year Warranty

Model	HP	Amps	Construction	Discharge Size	Adapter Size	Discharge Type	Cord Length	Solids Handling	Switch Type	Warranty
91875	1/2	11.4	Stainless Steel	1-1/4"	1-1/2"	Side	25'	1/2"	None	1 Year
92875	1/2	11.4	Stainless Steel	1-1/4"	1-1/2"	Side	25'	1/2"	Tethered	1 Year

Stainless Steel

Head	GPM	GPH
0'	93	5580
5'	85	5100
10'	78	4680
15'	68	4080
20'	50	3000
25'	39	2340
30'	15	900



1/4 HP Utility Pump



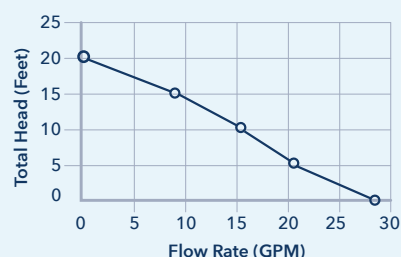
- Continuous duty, thermally protected split capacitor motor
- Pump will lift water up to 20' of vertical height
- Corrosion resistant stainless steel construction
- Large 1-1/4" discharge for high capacity pumping
- Clog resistant stainless steel impeller
- Intake screen removes easily for cleaning
- 5-3/4" width easily fits in many openings

1650 Gallons Per Hour | **1** Year Warranty

Model	HP	Amps	Construction	Discharge Size	Discharge Type	Cord length	Solids Handling	Warranty
91292	1/4	3.2	Stainless Steel	1-1/4"	Top	25'	1/8"	1 Year

Stainless Steel

Head	GPM	GPH
0'	28	1650
5'	21	1260
10'	15	900
15'	8	480
20'	0	0



1/3 & 1/2 HP Utility Pumps

Stainless Steel

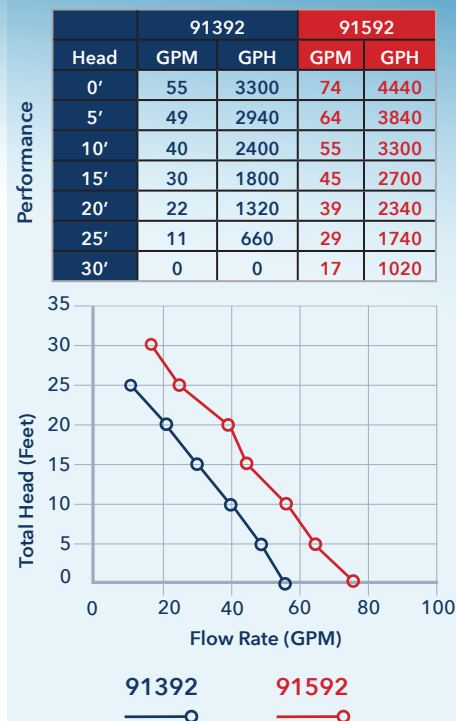


- Continuous duty, thermally protected split capacitor motor
- Pumps lift water up to 30' of vertical height
- Corrosion resistant stainless steel construction
- Large 1-1/4" discharge for high capacity pumping
- Clog resistant stainless steel impeller
- Intake screen removes easily for cleaning
- Pumps down to 1/8" from surface with removable thermoplastic base
- 7-1/2" width easily fits in many openings

3300 Gallons Per Hour | **1** Year Warranty

4440 Gallons Per Hour | **1** Year Warranty

Model	HP	Amps	Construction	Discharge Size	Discharge Type	Cord length	Solids Handling	Warranty
91392	1/3	6	Stainless Steel	1-1/4"	Top	25'	3/8"	1 Year
91592	1/2	8.5	Stainless Steel	1-1/4"	Top	25'	3/8"	1 Year



1 HP Utility Pump

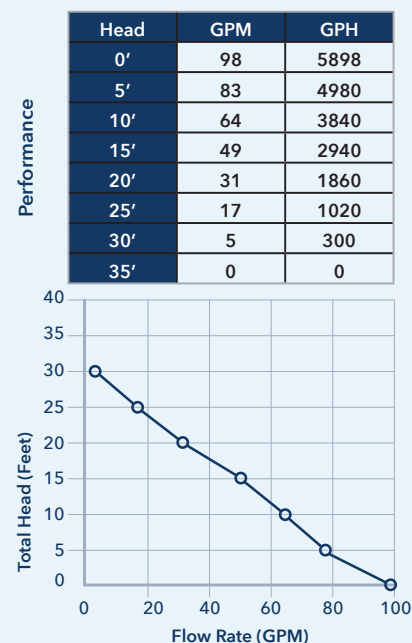
Stainless Steel



- Continuous duty, thermally protected split capacitor motor
- Pump will lift water up to 35' of vertical height
- Corrosion resistant stainless steel construction
- Large 1-1/2" discharge for high capacity pumping
- Clog resistant stainless steel impeller
- Intake screen removes easily for cleaning

5898 Gallons Per Hour | **1** Year Warranty

Model	HP	Amps	Construction	Discharge Size	Discharge Type	Cord length	Solids Handling	Warranty
91197	1	11.4	Stainless Steel	1-1/2"	Side	25'	1/8"	1 Year



1/5 HP Utility Pump



- Continuous duty, thermally protected split capacitor motor
- Pump will lift water up to 25' of vertical height
- Tough thermoplastic construction
- Large 1-1/4" discharge for high capacity pumping
- 25' nylon rope and garden hose adapter included

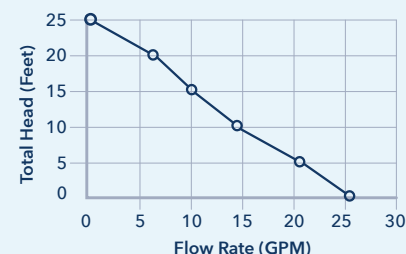
1560 Gallons Per Hour | **1** Year Warranty

Model	HP	Amps	Construction	Discharge Size	Discharge Type	Cord Length	Solids Handling	Warranty
91029	1/5	3.6	Thermoplastic	1-1/4"	Top	25'	1/8"	1 Year

Thermoplastic

Performance

Head	GPM	GPH
0'	26	1560
5'	21	1260
10'	14	840
15'	10	600
20'	7	420
25'	1	60



1/6 HP Utility Pump



- Continuous duty, thermally protected split capacitor motor
- Oil-free motor design
- Pump will lift water up to 25' of vertical height
- Tough thermoplastic construction
- 1" discharge
- Garden hose adapter included

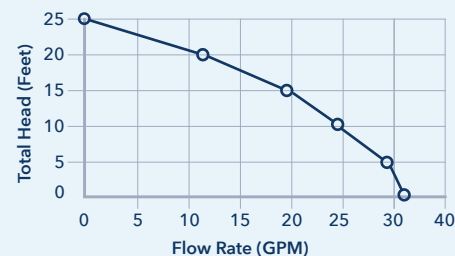
1920 Gallons Per Hour | **1** Year Warranty

Model	HP	Amps	Construction	Discharge Size	Discharge Type	Cord Length	Solids Handling	Warranty
91016	1/6	2.7	Thermoplastic	1"	Side	8'	1/8"	1 Year

Thermoplastic

Performance

Head	GPM	GPH
0'	32	1920
5'	29	1740
10'	24	1440
15'	19	1140
20'	12	720
25'	0	0



1/4 HP Utility Pump



- Continuous duty, thermally protected split capacitor motor
- Oil-free motor design
- Pump will lift water up to 25' of vertical height
- Tough thermoplastic construction
- 1" discharge
- Garden hose adapter included

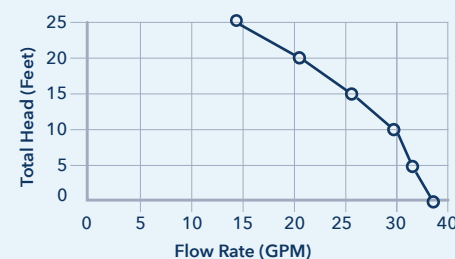
2220 Gallons Per Hour | **1** Year Warranty

Model	HP	Amps	Construction	Discharge Size	Discharge Type	Cord Length	Solids Handling	Warranty
91014	1/4	3.8	Thermoplastic	1"	Side	8'	1/8"	1 Year
91019	1/4	3.8	Thermoplastic	1"	Side	16'	1/8"	1 Year

Thermoplastic

Performance

Head	GPM	GPH
0'	37	2220
5'	34	2040
10'	30	1800
15'	26	1560
20'	21	1260
25'	14	840



1/4 HP Automatic Utility Pump

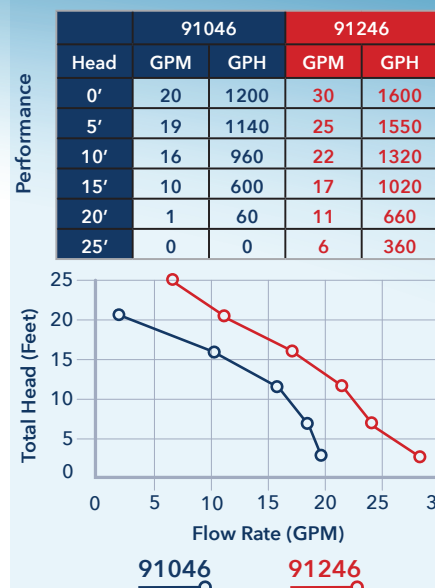


- Permanent split capacitor motor
- Pump will lift water up to 25' of vertical height
- Durable thermoplastic construction
- 1" (91046) or 1-1/4" (91246) discharge for high-capacity pumping
- 3/4" garden hose adapter included
- The pump will automatically turn on once the water level reaches 1-1/2" and turn off at approximately 1/8"

1200 Gallons Per Hour | 1 Year Warranty
1600 Gallons Per Hour | 1 Year Warranty

Model	HP	Amps	Construction	Discharge Size	Discharge Type	Cord Length	Solids Handling	Warranty
91046	1/6	2.0	Thermoplastic	1"	Top	10'	1/8"	1 Year
91246	1/4	3.5	Thermoplastic	1-1/4"	Top	10'	1/8"	1 Year

Thermoplastic



1/3 HP Utility Pump

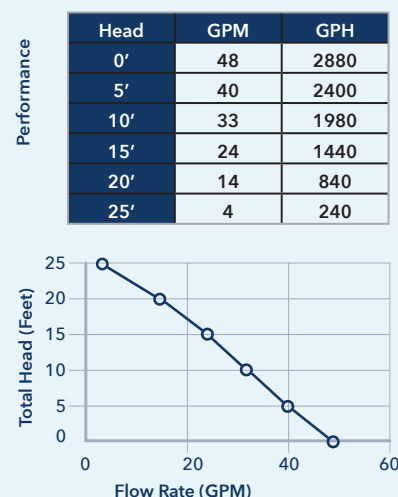


- Multi-purpose pump is ideal for ponds, fountains, waterfalls, basements and general water transfer
- Aquatic friendly oil free motor
- Tough thermoplastic construction
- Large 1-1/2" discharge for high capacity pumping
- Adapters included: 1-1/2" MPT, 1-1/4" BARB, 1" MPT, 3/4" garden hose thread

2880 Gallons Per Hour | 1 Year Warranty

Model	HP	Amps	Construction	Discharge Size	Discharge Type	Cord Length	Solids Handling	Warranty
91359	1/3	6.5	Thermoplastic	1-1/2"	Side	25'	3/16"	1 Year

Thermoplastic



1/2 HP Utility Pump

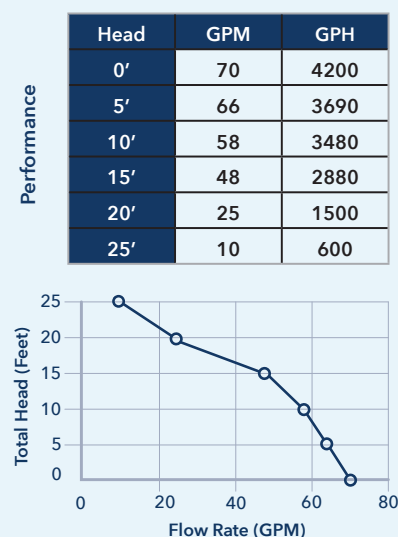


- Continuous duty, thermally protected split capacitor motor
- Pump will lift water up to 25' of vertical height
- Rugged cast iron construction
- Large 1-1/2" discharge for high capacity pumping
- Can be used as a sump pump by adding an optional float switch

4200 Gallons Per Hour | 3 Year Warranty

Model	HP	Amps	Construction	Discharge Size	Discharge Type	Cord Length	Solids Handling	Warranty
91505	1/2	7.6	Cast Iron	1-1/2"	Side	25'	1/2"	3 Year

Cast Iron



Mag Drive Utility

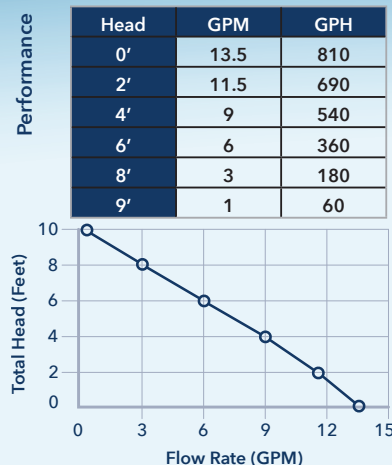


- Energy efficient 55 watt motor
- Thermoplastic construction
- Thermoplastic impeller
- 3/4" Garden hose adapter included
- Stainless steel fasteners
- Screen removes easily for cleaning
- Acceptable for indoor or outdoor use
- Compact, lightweight design is easily portable

800 Gallons Per Hour | **2** Year Warranty

Model	Watts	Construction	Discharge Size	Discharge Type	Cord Length	Warranty
90091	55	Thermoplastic	1" (3/4" GHT)	Top	25'	2 Year

Thermoplastic



1/2 HP Sump Pump

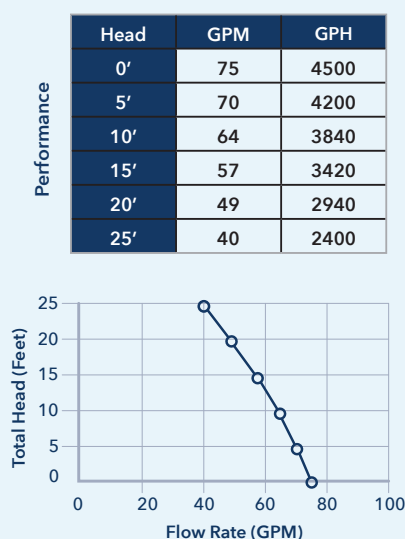


- Continuous duty, thermally protected split capacitor motor
- Pump will lift water up to 25' of vertical height
- Rugged stainless steel and cast iron construction
- Large 2" discharge for high capacity pumping
- 1-1/2" NPT adapter included
- Clog resistant thermoplastic vortex impeller
- Garden hose adapter, BARB adapter and 25' nylon rope included
- SJE Rhombus® float switch with piggy-back power plug

4500 Gallons Per Hour | **3** Year Warranty

Model	HP	Amps	Construction	Discharge Size	Switch Type	Cord Length	Solids Handling	Warranty
92588	1/2	7.5	Stainless / Cast Iron	2"	Tethered	25'	1/2"	3 Year
92589	1/2	7.5	Stainless / Cast Iron	2"	Vertical	25'	1/2"	3 Year

Cast Iron/Stainless Steel



3/4 HP Sump Pump

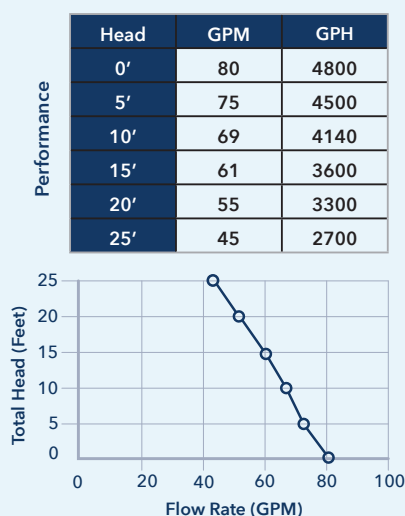


- Continuous duty, thermally protected split capacitor motor
- Pump will lift water up to 25' of vertical height
- Rugged stainless steel and cast iron construction
- Large 2" discharge for high capacity pumping
- 1-1/2" NPT adapter included
- Clog resistant thermoplastic vortex impeller
- Garden hose adapter, BARB adapter and 25' nylon rope included
- SJE Rhombus® float switch with piggy-back power plug

4800 Gallons Per Hour | **3** Year Warranty

Model	HP	Amps	Construction	Discharge Size	Switch Type	Cord Length	Solids Handling	Warranty
92788	1/2	7.5	Stainless / Cast Iron	2"	Tethered	25'	1/2"	3 Year
92789	1/2	7.5	Stainless / Cast Iron	2"	Vertical	25'	1/2"	3 Year

Cast Iron/Stainless Steel



1 HP Sump Pump



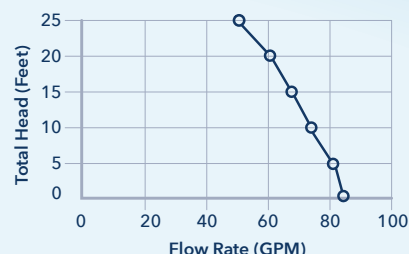
- Continuous duty, thermally protected split capacitor motor
- Pump will lift water up to 25' of vertical height
- Rugged stainless steel and cast iron construction
- Large 2" discharge for high capacity pumping
- 1-1/2" NPT adapter included
- Clog resistant thermoplastic vortex impeller
- Garden hose adapter, BARB adapter and 25' nylon rope included
- SJE Rhombus® float switch with piggy-back power plug

5160 Gallons Per Hour | **3** Year Warranty

Model	HP	Amps	Construction	Discharge Size	Switch Type	Cord Length	Solids Handling	Warranty
92189	1/2	7.5	Stainless / Cast Iron	2"	Tethered	25'	1/2"	3 Year
92159	1/2	7.5	Stainless / Cast Iron	2"	Vertical	25'	1/2"	3 Year

Cast Iron/Stainless Steel

Head	GPM	GPH
0'	86	5160
5'	81	4860
10'	75	4500
15'	68	4080
20'	61	3660
25'	52	3120



1/4 HP Sump Pump



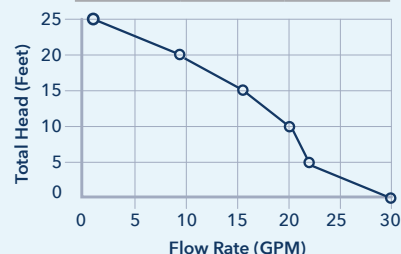
- Continuous duty, thermally protected split capacitor motor
- Pump will lift water up to 25' of vertical height
- Tough thermoplastic construction
- Large 1-1/4" or 1-1/2" discharge for high capacity pumping
- Thermoplastic impeller
- Garden hose adapter and 25' nylon rope included
- SJE Rhombus float switch with piggy-back power plug

1800 Gallons Per Hour | **1** Year Warranty

Model	HP	Amps	Construction	Discharge Size	Switch Type	Cord Length	Solids Handling	Warranty
92269	1/4	3.8	Thermoplastic	1-1/4" - 1-1/2"	Vertical	25'	1/8"	1 Year

Thermoplastic

Head	GPM	GPH
0'	30	1800
5'	22	1320
10'	20	1200
15'	16	960
20'	9	540
25'	2	120



1/3 HP Sump Pump



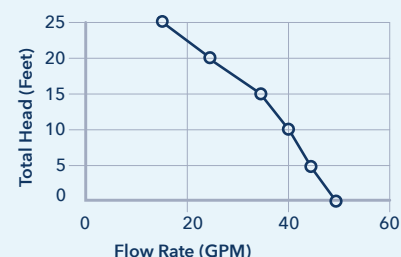
- Continuous duty, thermally protected split capacitor motor
- Pump will lift water up to 25' of vertical height
- Tough thermoplastic construction
- Large 1-1/2" discharge for high capacity pumping
- Thermoplastic impeller
- Garden hose adapter, BARB adapter and 25' nylon rope included
- SJE Rhombus® float switch with piggy-back power plug

2800 Gallons Per Hour | **1** Year Warranty

Model	HP	Amps	Construction	Discharge Size	Discharge Type	Switch Type	Cord Length	Solids Handling	Warranty
92378	1/3	4.1	Thermoplastic	1-1/2"	Side	Tethered	25'	3/8"	1 Year
92379	1/3	4.1	Thermoplastic	1-1/2"	Side	Vertical	25'	3/8"	1 Year

Thermoplastic

Head	GPM	GPH
0'	48	2800
5'	44	2640
10'	40	2400
15'	36	2160
20'	23	1380
25'	16	960



1/2 HP Sump Pump



- Continuous duty, thermally protected split capacitor motor
- Pump will lift water up to 25' of vertical height
- Tough thermoplastic construction
- Large 1-1/2" discharge for high capacity pumping
- Stainless steel impeller
- SJE Rhombus® float switch with piggy-back power plug

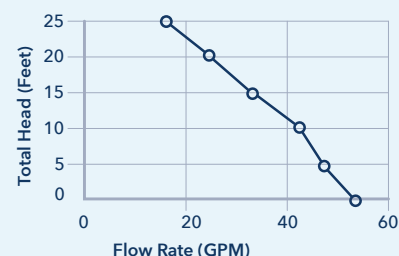
3300 Gallons Per Hour | **3** Year Warranty

Model	HP	Amps	Construction	Discharge Size	Switch Type	Cord Length	Solids Handling	Warranty
92570-25	1/2	4.9	Thermoplastic	1-1/2"	Tethered	25'	3/8"	3 Year

Thermoplastic

Performance

Head	GPM	GPH
0'	55	3300
5'	48	2880
10'	42	2520
15'	34	2040
20'	25	1500
25'	16	960



1/3 HP Sump Pump



- Continuous duty, thermally protected split capacitor motor
- Pump will lift water up to 25' of vertical height
- Rugged cast iron construction
- Large 1-1/2" discharge for high capacity pumping
- Stainless steel impeller
- Garden hose adapter, BARB adapter and 25' nylon rope included
- SJE Rhombus® float switch with piggy-back power plug

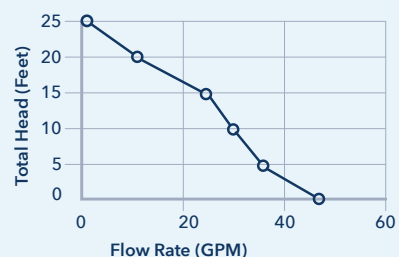
2760 Gallons Per Hour | **3** Year Warranty

Model	HP	Amps	Construction	Discharge Size	Discharge Type	Switch Type	Cord Length	Solids Handling	Warranty
92339	1/3	4.1	Cast Iron	1-1/2"	Side	Tethered	25'	1/2"	3 Year
92349	1/3	4.1	Cast Iron	1-1/2"	Side	Vertical	25'	1/2"	3 Year

Cast Iron

Performance

Head	GPM	GPH
0'	46	2760
5'	36	2160
10'	30	1800
15'	25	1500
20'	12	720
25'	1	60



1/3 HP Sump Pump



- Continuous duty, thermally protected split capacitor motor
- Pump will lift water up to 25' of vertical height
- Rugged cast iron construction
- Large 1-1/2" discharge for high capacity pumping
- Thermoplastic impeller
- Garden hose adapter, BARB adapter and 25' nylon rope included
- SJE Rhombus® float switch with piggy-back power plug

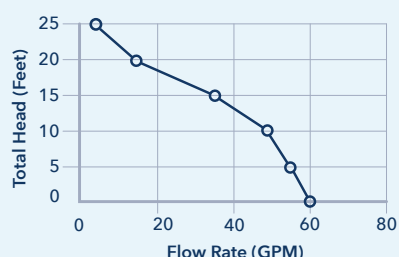
3600 Gallons Per Hour | **3** Year Warranty

Model	HP	Amps	Construction	Discharge Size	Discharge Type	Switch Type	Cord Length	Solids Handling	Warranty
92358	1/3	7.6	Cast Iron	1-1/2"	Side	Tethered	25'	1/2"	3 Year
92359	1/3	7.6	Cast Iron	1-1/2"	Side	Vertical	25'	1/2"	3 Year

Cast Iron

Performance

Head	GPM	GPH
0'	60	3600
5'	56	3360
10'	50	3000
15'	35	2100
20'	15	900
25'	6	360



Accessories

Float Switches



Model 92005 Tethered Float switch

- Non-mercury tethered float switch
- 25' cord with piggy-back plug
- 1 Year Warranty

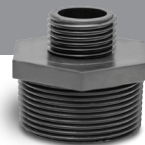


Model 92025 Vertical Float switch

- Non-mercury vertical float switch
- 25' cord with piggy-back plug
- 1 Year Warranty

Adapters

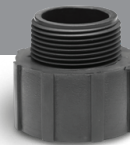
- 99001 - 1-1/2" MPT x 3/4" garden hose thread
- 99003 - 1" FPT x 3/4" garden hose thread
- 99004 - 1-1/4" MPT x 1-1/2" FPT
- 99005 - 1-1/4" MPT x 3/4" garden hose thread
- 99006 - 1-1/4" FPT x 3/4" garden hose thread
- 99007 - 1-1/4" FPT x 1-1/2" MPT or 1-1/4" FPT
- 99063 - 1" MPT x 3/4" garden hose thread
- 99248 - 3/4" FGHT swivel union



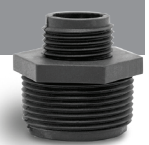
99001



99003



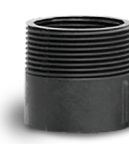
99004



99005



99006



99007



99063



99248

50' Reinforced Lay-Flat Discharge Hose Kit

Model 99620

- 50' reinforced industrial 1-1/2" discharge hose
- Cam-lock fittings included
- Expandable: Includes fitting (B) to connect multiple hoses together
- For use with most pumps with 1-1/4" or 1-1/2" discharge



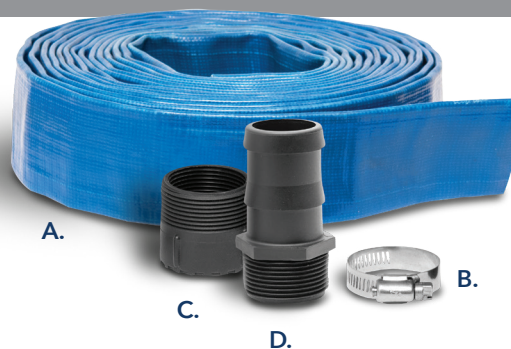
Kit includes:

- A.** 1-1/2" x 50' reinforced industrial lay-flat hose with 1-1/2" Female Cam-lock and 1-1/2" Hose BARB
- B.** 1-1/2" Male Cam-lock x 1-1/2" Hose BARB
- C.** 1-1/2" Male Cam-lock x 1-1/4" MPT
- D.** 1-1/4" FPT x 1-1/4" FPT or 1-1/2" MPT coupling
- E.** Stainless steel hose clamp

25' Lay-Flat Discharge Hose Kit

Model 99621

- For use with most sump and utility pumps with 1-1/4" or 1-1/2" discharge
- Easily rolls up for compact storage
- Adapter fittings included



Kit includes:

- A.** 1-1/2" x 25' reinforced PVC lay-flat hose
- B.** Stainless steel hose clamp
- C.** 1-1/4" FPT x 1-1/4" FPT or 1-1/2" MPT coupling / adapter
- D.** 1/4" MPT x 1-1/2" BARB adapter

Accessories

Pump Hose Kits



99624



99625

Poly Drainage Tubing

- Works with most pumps with a discharge size of 1-1/4" or 1-1/2"
- For permanent or temporary use
- High quality poly drainage tubing
- Includes adapter(s) with rust resistant hose clamps
- Easy installation

Model	Hose Size	Description	Adapters Included	Hose Clamp
99624	1-1/4" x 24"	Universal Hose Kit	1-1/4" and 1-1/2"	Yes
99625	1-1/2" x 24"	1-1/2" Hose Kit	1-1/2"	Yes

Swing Check Valves



99505



99555



99507 / 99509



99547 / 99549

Model	Material	Size & Connection	Type
UNIVERSAL CHECK VALVES			
99505	ABS	1-1/4" FPT or 1-1/2" MPT x 1-1/4" FPT or 1-1/2" MPT"	SWING
99555	ABS	1-1/4" FPT/MPT or 1-1/2" FPT/MPT x 1-1/4" FPT/MPT or 1-1/2" FPT/MPT	SWING
MPT x BARB/SPG CHECK VALVES			
99507	ABS	1-1/4" MPT x 1-1/4" BARB or 1-1/2" SPG	SWING
99509	ABS	1-1/2" MPT x 1-1/4" BARB or 1-1/2" SPG	SWING
99547	PVC	1-1/4" MPT x 1-1/4" BARB or 1-1/2" SPG	SWING
99549	PVC	1-1/2" MPT x 1-1/4" BARB or 1-1/2" SPG	SWING
99508	ABS	1-1/2" MPT x 1-1/2" BARB	SWING
RUBBER COUPLING CHECK VALVES			
99544	ABS	1-1/4" x 1-1/4"	SWING
99522	ABS	1-1/2" x 1-1/2"	SWING
99529	ABS	2" x 2"	SWING
99502	ABS	1-1/4" or 1-1/2" x 1-1/4" or 1-1/2"	SWING
MPT x RUBBER COUPLING (RC) CHECK VALVES			
99477	ABS	1-1/4" MPT x 1-1/4" or 1-1/2" RC	SWING
99479	ABS	1-1/2" MPT x 1-1/4" or 1-1/2" RC	SWING



99477 / 99479



99544



99522



99502



99529

- Durable ABS or PVC construction
- Weighted flapper seal
- Full flow design reduces flow loss
- Pressure rating:
 - 4.3 PSI @ 140° F (60° C) Rubber Coupling Installation
 - 25 PSI @ 140° F (60° C) Solvent Weld Installation
- 300 Grade Stainless Steel Clamps (Rubber Coupling Models)
- Maximum fluid temperature 140° F (60° C)
- Not for use with compressed air, gasses or potable water

Accessories

PVC Check Valves

99524/99525

99582/99579



99590/99588

99545

99526/99527

Model	Material	Size & Connection	Type
SOLVENT WELD CHECK VALVES - SLIP X SLIP			
99526	PVC	1-1/2" X 1-1/2"	SWING
99527	PVC	2" X 2"	SWING
COMPRESSION CHECK VALVES - COMPRESSION X COMPRESSION			
99524	PVC	1-1/2" X 1-1/2"	SWING
99525	PVC	2" X 2"	SWING
BALL / CHECK VALVE COMBINATION - UNION X SLIP			
99582	PVC	1-1/2" UNION X 1-1/2" SLIP	SWING
99579	PVC	2" UNION X 2" SLIP	SWING
QUIET TRUE UNION CHECK VALVES - UNION X UNION			
99590	PVC	1-1/2" X 1-1/2"	1/2 lb. SPRING
99588	PVC	2" X 2"	1/2 lb. SPRING
SUMP PUMP CHECK VALVE - COMPRESSION			
99545	PVC	1-1/4" or 1-1/2" x 1-1/4" or 1-1/2"	SWING

- Constructed from Type 1 PVC
- Weighted flapper seal
- Full flow design reduces flow loss
- Can be installed vertically or horizontally
- Pressure rating: 125 PSI @ 75° F (24° C)
- Maximum fluid temperature 140° F (60° C)
- Conforms to ASTM D2466
- Not for use with compressed air, gasses or potable water



High quality construction and proven performance make our pumps **Superior.**